

Tenor Madness (Part 1 - melody)

Sonny Rollins

Tenor Madness is a 12-bar blues with a bebop melody. It was originally played with a medium-fast swing feel.

On Cue: Background for solos. (Duplicates Part 2).

Shout chorus (3 parts). Play after solos (optional)

D.S. al Coda

Supplemental Material - Tenor Madness

Sample Piano Voicings

Basic 3-note voicings

Rootless voicings

$B^{\flat 7}$
 $E^{\flat 7}$
 C_{MI}^7
 F^7
 $B^{\flat 7}$
 $E^{\flat 7}$
 C_{MI}^7
 F^7

3 $b7$ $b3$ $b7$ 9 13 9 5
 $b7$ 3 $b7$ 3 $b7$ 3 $b7$ 3
 1 1 1 1 3 $b7$ $b3$ $b7$

Useful Scales

B^{\flat} Blues Scale

1 $b3$ 4 $b5$ 5 $b7$ 1

Sample Bass Line

$B^{\flat 7}$
 $E^{\flat 7}$
 $B^{\flat 7}$

1 3 5 $b5$ 1 $b7$ 6 $b6$ 1 5 6 $b7$ 1 3 6 5
 1 3 5 3 1 $b7$ 6 $b6$ 1 2 3 2 5 4 3 $b3$
 1 5 $b3$ 3 1 $b7$ 5 3 1 3 4 $\#4$ 1 $b7$ 6 5

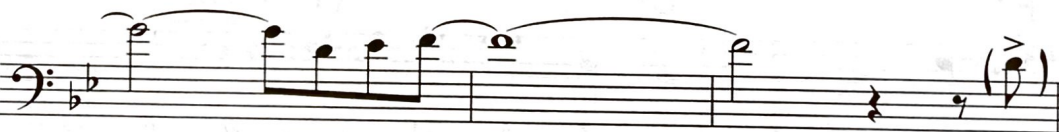
Tenor Madness (Part 2 - harmony)



On Cue: Background for solos.



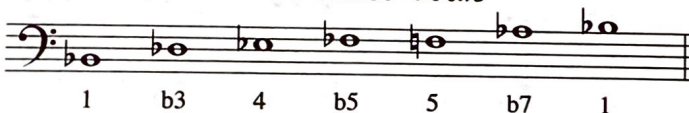
Shout chorus. Play after solos (optional)



D.S. al Coda

(for D.S.)

Useful scales: Bb Blues Scale



1 b3 4 b5 5 b7 1

